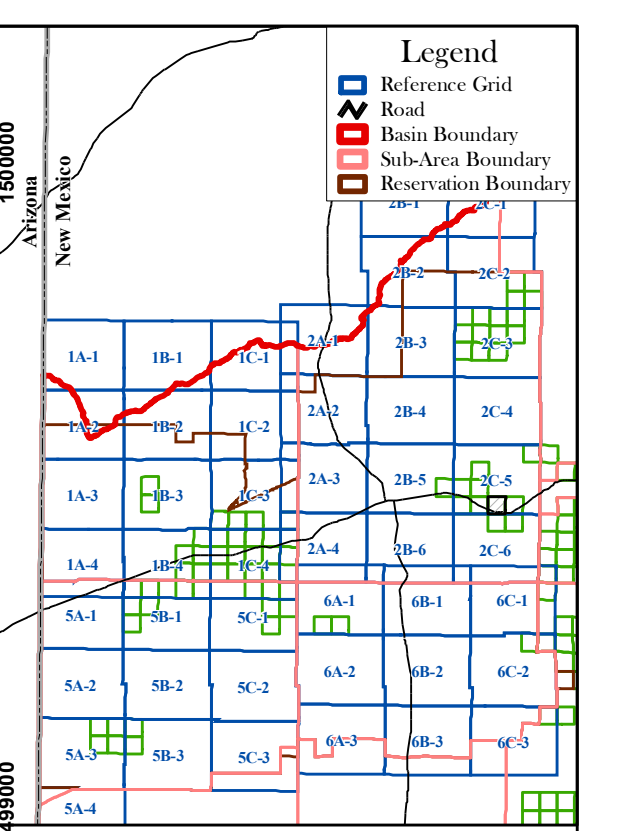
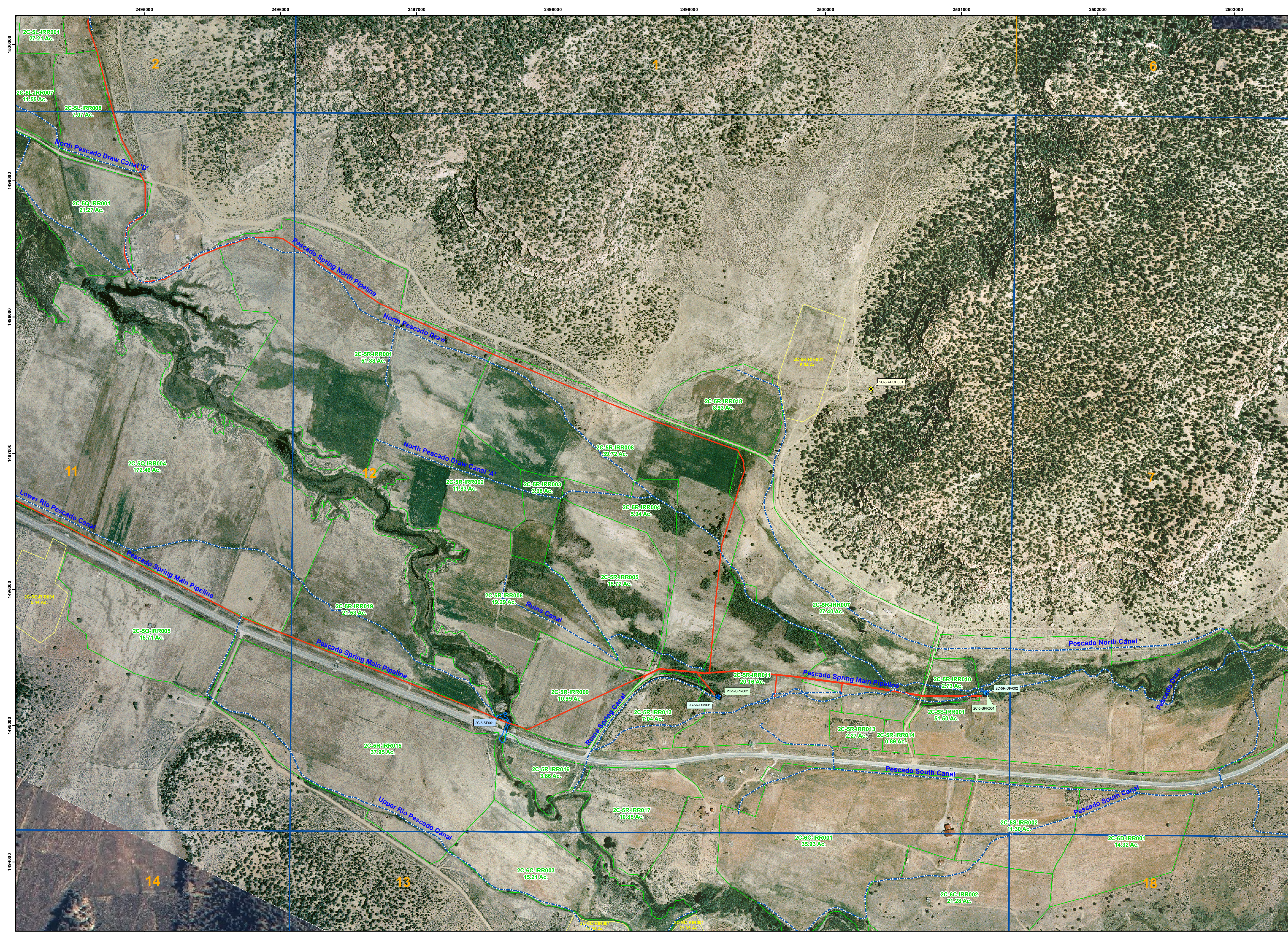


2495000 2496000 2497000 2498000 2499000 2500000 2501000 2502000 2503000

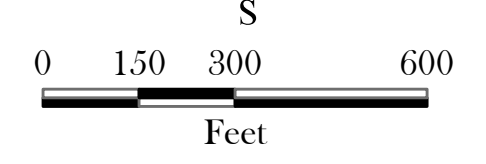
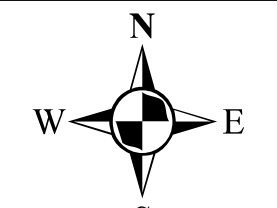
2495000 2496000 2497000 2498000 2499000 2500000 2501000 2502000 2503000



INDEX

LEGEND

- POINT OF DIVERSION (RUNOFF)
- POINT OF DIVERSION
- SPRING
- IRRIGATION PIPELINE
- IRRIGATION CANAL
- STOCKPOND (MAN-MADE)
- RESERVOIR
- IRRIGATION PROJECT ACREAGE
- NON-PROJECT ACREAGE
- RESERVATION BOUNDARY
- SUB-AREA BOUNDARY
- TOWNSHIP/RANGE LINE
- SECTION LINE
- MAP INDEX LINE



March 2007

Labels that are truncated appear on an adjacent map.

Map is displayed in New Mexico State Plane Coordinate System, West Zone, NAD 1983.

Background Sources:
Aerial photography exposed July, 2001 by New Mexico Aerial Surveys, Inc. of Albuquerque, New Mexico.

Digital Orthophoto Quarter-Quadrangles were produced by the Bureau of Land Management's (BLM) Geographic Coordinate Data Base (GCDB), received from EnviroLogic, Inc.

Section, Township, and Range lines originated from the Bureau of Land Management's (BLM) Geographic Coordinate Data Base (GCDB), received from EnviroLogic, Inc.

Township: 10 North Range: 17 West

Township: 10 North Range: 17 West

Zuni River Basin Hydrographic Survey
Irrigated Acreage - Zuni Indian Reservation
Map 2C-5R 1" = 300'

Natural Resources Consulting Engineers, Inc.
Fort Collins, CO Oakland, CA Asmara, ERTREA

Project Manager:
L. Niel Allen, P.E., Ph.D.

